



GMT MONTHLY MEMBERSHIP PROGRESS REPORT

Results as of: 1/31/2017

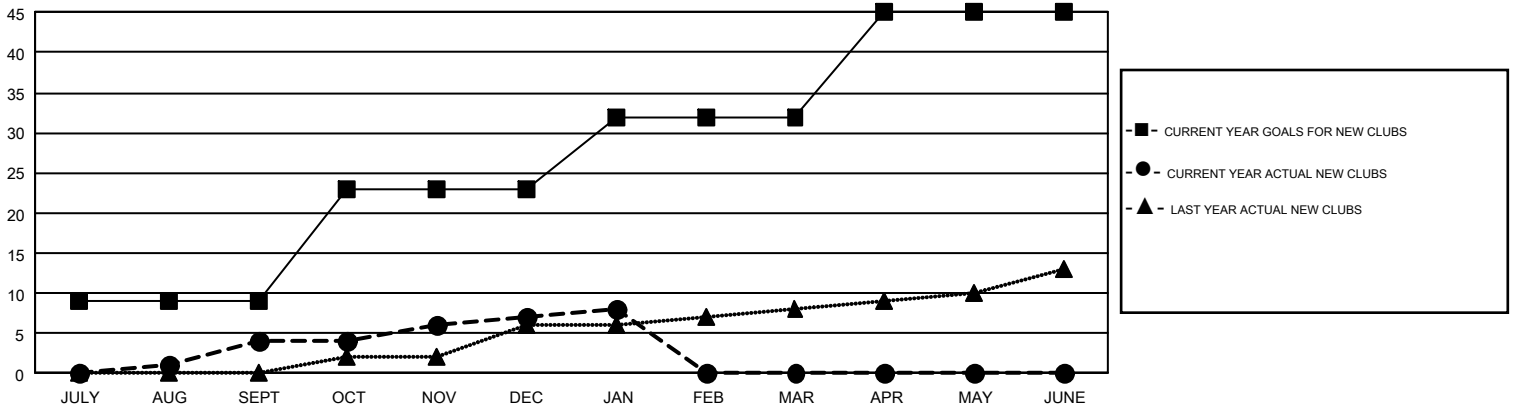
GMT Constitutional Area 1, Group C

GMT: THOMAS MATNEY

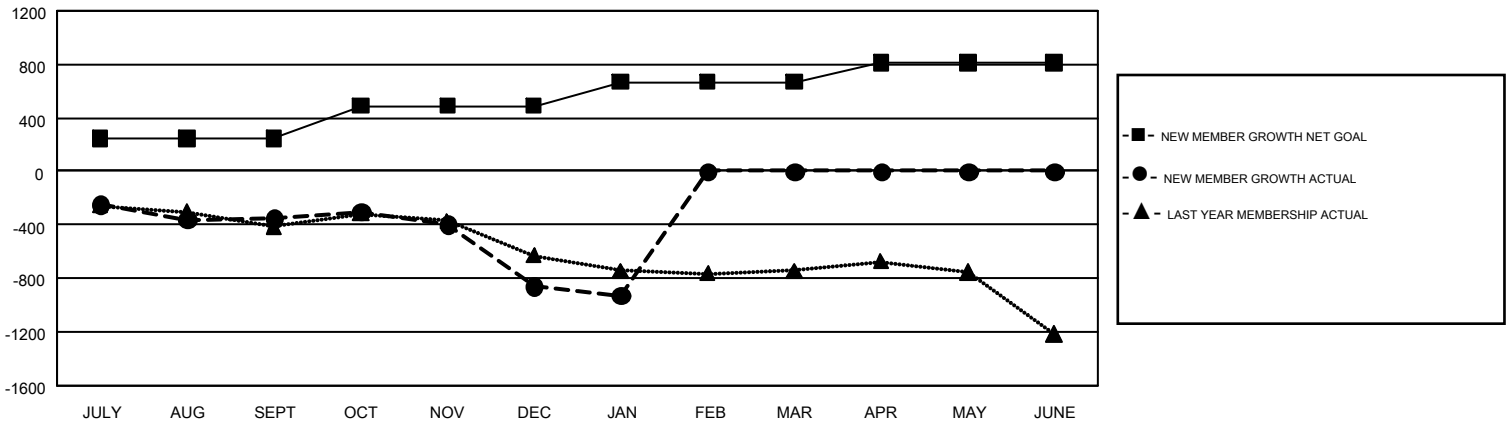
REPORT DOES NOT INCLUDE CLUBS IN UNDISTRICTED AREAS.

Clubs				Members			
RESULTS FOR 2016-2017				RESULTS FOR 2016-2017			
QUARTER	NEW CLUB GOAL	NEW CLUBS	DROPPED CLUBS	QUARTER	NEW MEMBER GROWTH NET GOAL (not reinstated or transfers)	NEW MEMBER GROWTH ACTUAL (not reinstated or transfers)	DROPPED MEMBERS ACTUAL (including transfers)
JULY/AUG/SEPT	9	4	6	JULY/AUG/SEPT	248	895	1,244
OCT/NOV/DEC	14	3	11	OCT/NOV/DEC	241	839	1,350
JAN/FEB/MAR	9	1	2	JAN/FEB/MAR	180	365	432
APR/MAY/JUNE	13	0	0	APR/MAY/JUNE	142	0	0

GOALS AND ACTUAL NEW CLUBS CUMULATIVE



GOALS AND ACTUAL MEMBERS CUMULATIVE



DROPPED CLUBS: 19	725 CLUBS OF 1,538 ADDED 1 OR MORE NEW MEMBERS	GENDER DISTRIBUTION MALE 30,711 (73.40%) FEMALE 11,130 (26.60%)
DROPPED MEMBERS DECEASED 407 CLUB CANCELLED 142 OTHER 2,477 <hr/> TOTAL 3,026	CLICK HERE FOR CUMULATIVE MEMBERSHIP DATA	TOTAL FAMILY UNIT MEMBERS 7,676 FAMILY MEMBERS PAYING HALF DUES 3,936